

Rutherglen Heritage Walk

A Self-Guided Tour of Rutherglen's Historic Streetscapes



Rutherglen
Fall of Flavour

REDEFINING THE TRADITIONS OF ONE OF THE WORLD'S BEST FORTIFIED WINE REGIONS

We bear the name of one of the oldest and most recognised wine regions in Australia and our mission is to produce the most regionally typical premium wines most suited to the Rutherglen region. Our wines are produced entirely from fruit grown on our own Rutherglen vineyards.

Rutherglen Estates is internationally celebrated for producing inspired alternative varietals and blends from Viognier, Marsanne, Fiano, Arneis, Savagnin, Shiraz, Sangiovese, Mourvedre, Grenache and Durif.



PROUDLY REGIONAL | ESTATE GROWN
QUALITY | INNOVATION & PERSONALITY



CELLAR DOOR
OPEN 7 DAYS 10AM TO 5.30PM
13-35 Drummond Street, Rutherglen Victoria
02 6032 7999
cellar@rutherglenestates.com.au
www.rutherglenestates.com.au



In the beginning...

The area around Rutherglen was originally settled in 1836 by a number of squatters; John Foord, John Crisp from Wahgunyah, James Lindsay Brown, Thomas Clarke from Gooramadda and Joseph Bould from Boorhaman.

The discovery of gold some twenty years later in the nearby Chiltern area caused a great deal of excitement and saw the beginning of exploration in the vicinity of what is now the corner of Main and Drummond Streets. Within weeks of the initial gold strike on September 9th 1860, thousands had moved to the settlement. The entrepreneurial John Wallace anticipated the needs of the expanding settlement well and positioned the first major establishment, the Star Hotel in its choice Main Street location.

The town grew quickly and by 1861 it had 21 hotels, a newspaper, three schools, a police station and a population of 20,000 people. Although it was gold which drove the initial thrust of immigration, it is wine which has made Rutherglen famous today. The first planting of grapes for wine in the district was undertaken by John Lindsay Brown in the 1850s and more vineyards followed, after successes in overseas shows and a growing export demand.

By 1890, Rutherglen was producing a quarter of Australia's wine. However, tragedy struck in the form of phylloxera and by the late 1890s, Rutherglen wineries, along with many others throughout Australia, lost their vines to the dreaded root-destroying pest which remains in the soil to this day.

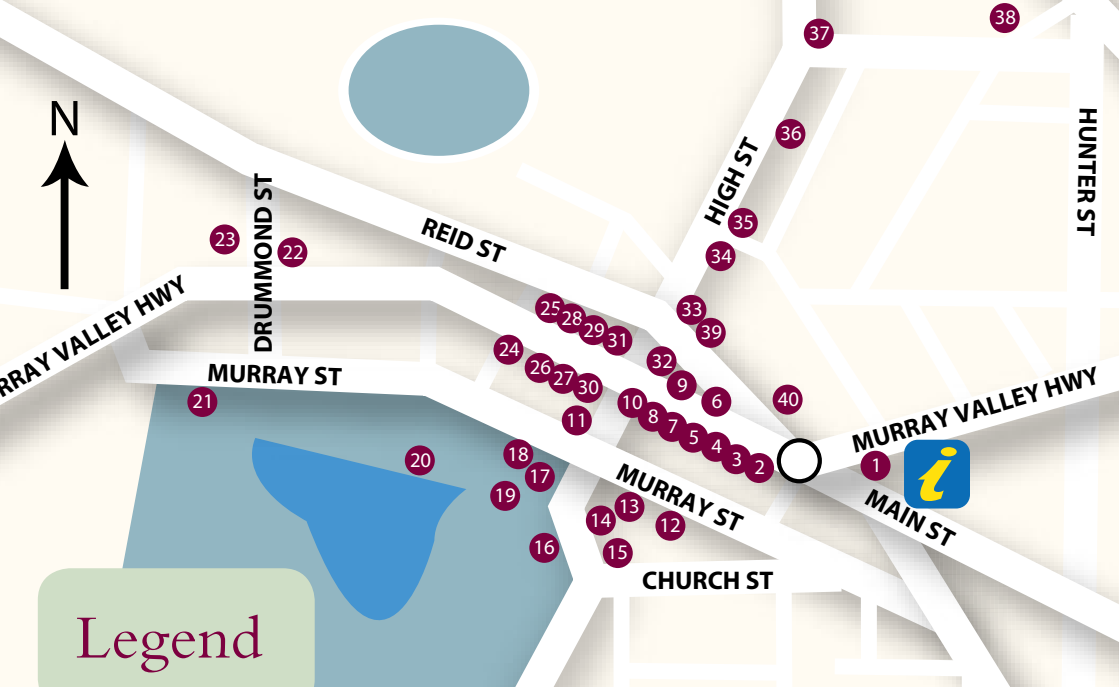
Follow the map and take a leisurely 90 minute stroll around the Rutherglen township. Look up and see wonderful lead light and patterned glass, simple but elegant features of a bygone era, and take in the style and structure of Victorian buildings reflecting the town's long history of wealth and hard work.

Where else
in the world
could you
name a town
for the cost
of a few
beers?

Over a few drinks, one John Wallace was told "Shout the whole bar and you can call this town whatever you like!". And so he did, calling the new goldfields township Rutherglen after his native home town in Scotland.



Rutherglen Map



Legend

- | | | | |
|----|---|----|--|
| 1 | 57 Main Street | 22 | Cairn commemorating the Discovery of Gold |
| 2 | 68 Main Street | 23 | 13-35 Drummond St |
| 3 | 70 Main Street | 24 | 148-152 Main Street |
| 4 | 76/78 Main Street | 25 | 143-145 Main Street, Grahams Building |
| 5 | 80 Main Street | 26 | 120 Main Street |
| 6 | 81 Main Street | 27 | Hitching Rail, outside 116 Main Street |
| 7 | 84 Main Street | 28 | 113 Main Street, Rutherglen Apothecary |
| 8 | A Pub with its own Morgue | 29 | 111 Main Street, Sun Printing Office |
| 9 | 83 Main Street | 30 | 104 Main Street |
| 10 | 92 Main Street | 31 | 105 Main Street |
| 11 | 147 High Street | 32 | 130 High St |
| 12 | Rutherglen State and Higher Elementary School No. 522 | 33 | High Street, Drinking Fountain |
| 13 | The Common School | 34 | 108 High Street |
| 14 | 157 High Street - The Masonic Lodge | 35 | 100 High Street |
| 15 | St Stephen's Rectory | 36 | 92 High Street |
| 16 | Rutherglen Court House | 37 | Corner High and Culbertson Streets, Mount Carmel Convent |
| 17 | Rutherglen Memorial Hall | 38 | The Water Tower |
| 18 | Rutherglen Memorial Gardens | 39 | The Wallace Cairn |
| 19 | Rutherglen Swimming Pool | 40 | Rutherglen Railway Station |
| 20 | Lake King and Viewing Platform | | |
| 21 | Rutherglen Golf Club | | |

We suggest you start at...

1 57 Main Street

This building, which now houses the Rutherglen Wine Experience and Visitor Information Centre, was erected in 1862 as a drapery and general store. The Aitken & Fullerton sign displayed on the wall comes from the original grocery delivery cart and the original building finished where the information counter now stands. It was around this area that the cashier sat receiving payment for purchase via an old shuttle wire system. Additions and the verandah were added in 1896.



Cross over at the roundabout to the left hand (south) side of Main Street and commence your historic walk. One of the first things you may notice is a red and white tiled entrance in front of a vacant lot. This lot was once the 'Red Boot Shop' which was, naturally enough, a footwear store that dated to the 1860's. It was demolished sometime after WWII, and no trace remained until a wild storm uncovered the tiled entrance in the mid 2000's.

2 68 Main Street

Built in 1896 as the Standard Bakery by Conrad Huhs, a German immigrant, the building originally had a full upstairs balcony. A typical Victorian building of considerable style.



Rutherglen Wine Experience



The Rutherglen Standard Bakery

Next door on this same side is a unique example of architectural style at:

3 70 Main Street

The original site of the Crown Hotel. The current building was built in 1906 as a Doctor's Surgery and residence for Dr H Bush. It remained a Doctor's Surgery until 1983. The pressed metal verandah sides are a very unusual feature and were probably requested by the original owner.

Continue walking, taking note of the exterior of Number 74 Main Street, where the wall tiles are typical for a butcher shop of the 1930s. Notice the blue tiles on the wall at each end of the window depicting the various sources of the products available for sale.

4 76/78 Main Street

Formerly the Glen Bakery, this shop, residence and bake house was erected in 1932 by Alex Highland. The facade, lead-light and wrought iron depict the Art Deco building style of the day. The Rutherglen Brass Band was formed on this site in 1885.

5 80 Main Street

This building was erected in 1899 for the Bank of Australasia and opened for business in January 1900. The style, size and layout of the building was typical for this company's small to medium size branches.

In 1951 the Bank of Australasia and the Union Bank of Australia merged to form the Australia and New Zealand Bank (ANZ) and the building continued to operate as an ANZ branch until 1996.



Bank of Australasia circa 1910

Opposite on the north side of Main Street, you will find a double-storey building.

6 81 Main Street

Built in 1860, this property was the first two-storied building in Rutherglen. A number of photographic glass negatives found in the ceiling of this building are now on display at the Historical Museum.

As you continue to walk along Main Street, on your left is:

7 84 Main Street

This single fronted Victorian shop was once a photographic studio where Henry Hugen operated his business from 1904 to 1916. Look up at the verandah roof and you will see the original photographic sign.

A few metres further and you will arrive at one of the 21 original hotels of Rutherglen. Classified by the National Trust, the Victoria Hotel represents a classic Victorian country hotel and it has a particularly unusual feature!



Town mortuary circa 1868

8 A Pub with its own Morgue

This wonderful hotel was designed by Gordon & Gordon and built by a Benalla builder George Diggle for Mr S P Gollings. Opened in 1894, it replaced a 14 room wooden hotel that had stood on the site from the early 1860s. Three hundred and fifty thousand bricks were required to complete the work! At night a large acetylene lamp outside the front door was turned on, lighting the street and the laneway opposite to encourage travellers to head for the hotel. The lamp is currently in the Historical Society's care and may be viewed in the Common School Museum.

If you look through the carriage gates you will see a small brick building to the left. This was the town mortuary and dates back to the early 1860s. The usual custom in the country was for the local hotel to offer a room, when required for the coroner and undertaker to carry out their work. It seems Mr S. P. Gollings had an aversion to this use of a guest room, hence this unique addition to the property.



Victoria Hotel circa 1910

Look opposite the Victoria Hotel and you will see the Rutherglen Post Office.

As you continue along look up under the roof over the footpath of :

9 83 Main Street

This building was erected in 1910 and incorporates two of the rooms from the original Post Office that occupied the site from 1863 to 1910. Part of the building housed the Rutherglen Telephone Exchange and the Victorian Customs & Excise Department.

Adjacent to the Post Office on the left side is Gollings Square.

This square was named in honour of Shadrack Gollings, owner of the Victoria Hotel (1888 – 1937), who provided part of the land comprising the square. This was originally a laneway and removed any visual restriction making the Victoria Hotel clearly visible to travellers leaving the Railway Station.



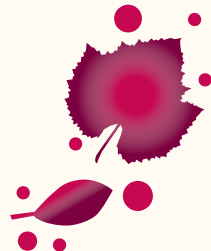
“John Orr became Postmaster at £20 a year. Business became so brisk it was later increased to £60 per year.”

10 92 Main Street

You will notice the power cables and insulators dating from the era when Rutherglen’s power was supplied by the Borough Council, using a generator that was located in what is now Apex Park. The switch for Rutherglen’s first power was turned on by Mrs Gollings on 23rd July 1913. This generating system remained until Rutherglen was connected to the State grid in 1926.

Once you reach the intersection of Main Street and High Street turn left, and proceed until you reach the giant fig tree on the next corner.

This enormous Moreton Bay Fig tree was planted by Horice Derrick and William Booth in 1877. Since then it has grown to a massive 23 metres!



Looking across the road you will notice

11 147 High Street

This charming building was built in 1897 as a residence and surgery for Dr (later Sir) John Harris who was born in Chiltern in 1865. Dr Harris went on to become an Honorary Minister of the Legislative Council between 1920 and 1946 and Minister of Public Instruction and Public Health from 1935 until 1942.

At this intersection turn left into Murray Street. A few metres along on your left you will see the rear of the Victoria Hotel.

The accommodation area with its long east facing verandah overlooks the mortuary referred to earlier and you can also see the brick building on the road boundary which housed the stables and laundry.



Sir John Harris Home & Surgery

Continue along Murray Street and look across the road to see:

12 Rutherglen State and Higher Elementary School No. 522

Commenced in 1908, this building's foundation stone was laid on 26th March. Rutherglen State and Higher Elementary School No. 522 was officially opened on Wednesday February 3rd 1909 by the Hon A A Billson, Minister for Public Instruction, with a silver key made by Mr Gibbs, a local silversmith. The building originally had ten rooms with a fireplace in each and seating tiered to the rear wall rather like that of a modern university lecture room. The importance for the town of this astonishingly up-to-date school was

recorded in a four-page layout in a local newspaper printed the day after the official opening ceremony. The architect, Colonel Watson of The Public Works Department gave a graphic account of the ingenious ventilation system employed to maintain fresh airflow to the rooms. Great care was taken with the addition of new rooms in 1990 to ensure they blended with the original building.

Early in its history, the school started and has maintained a link with the Rutherglen school in Scotland and over the years flags have been exchanged. In 1911, a Union Jack was offered to the school in a well-presented timber box which survives as a reminder of the historic links that have been forged.



Rutherglen State Higher Elementary School circa 1909

As you cross over the street and turn back (westwards) to continue your walk along the south side of Murray Street, you will come across:

13 The Common School

This simple building was the very first purpose built school for the children of Rutherglen. The school was built in 1872 from a sketch drawn by John Banks and opened in 1873 with an initial roll of 84 pupils. Later that year the number had increased to approximately 300, when aid to denominational schools was withdrawn. A further two rooms were added in 1874. This building was still used until 1961 when the new Rutherglen High School was built! It was



This early photograph shows the school's first teacher, Mr Allan Buckley.

earmarked for demolition by the Victorian Education Department but was saved by a local teacher who suggested that the building could be used by the Historical Society. Inside you will see a classroom laid out as at the turn of the century.

It now houses the Historical Museum which is open most Sundays between 1.00 pm and 4.00 pm

Continue your walk along this side of the street until you arrive back at the intersection of Murray and High Streets. Turn left into High Street and continue up a slight rise, passing a number of small Victorian era cottages.

14 157 High Street - The Masonic Lodge

Masons still meet in this wonderful old building that was consecrated on the 31st of July 1902. It demonstrates the skillful application of hard plastering and is a fine example of Victorian Italianate architecture.



RUTHERGLEN

HISTORICAL SOCIETY

COMMON SCHOOL MUSEUM

Murray Street Rutherglen



Take a step back in time with a visit to the Common School Museum. A fascinating window into the rich history of Rutherglen and surrounds.

Open every Sunday 1pm – 4pm.

Other times by appointment.



RUTHERGLEN GOLD BATTERY

Battery Road Rutherglen

Visit Victoria's only remaining operating gold battery – part of the Indigo Gold Trail

Open 9.00am – 5.00pm daily. Free entry - swipe cards to viewing platform available from the Rutherglen Wine Experience.

RUTHERGLEN HISTORICAL SOCIETY

PHONE (02) 60 329 425

MOBILE 0408 087 079

www.rutherglenhistoricalsociety.com.au

info@rutherglenhistoricalsociety.com.au

As you walk along you will pass the long grape-covered verandah of the Rectory of the Anglican Parish of Rutherglen. By its side is the small but beautifully maintained church of St Stephen's.

15 St Stephen's Rectory

A Government grant in January 1864 started the fund raising for the building of the church with the first service being conducted on 21st August 1865 and consecration in 1887. A new metal steeple replaced the original wooden one in 1984. The simple wooden interior decor with pale blue plasterwork highlights the stained glass windows donated by several original winemaking families of Rutherglen.



St Stephen's Rectory circa 1912



St Stephen's Church circa 1860s

Now turn back towards Main Street and look across the road to see the next group of buildings.

16 Rutherglen Court House

Prior to 1864, Rutherglen's legal proceedings were held in a tent. If the weather was inclement an umbrella needed to be held over the clerk to avoid the ink smudging. Spectators however had to stand in the rain. The courthouse opened in February 1864 and was extended at the front in 1905.

One notable trial was held in 1899 following a payroll robbery at the Great Southern Mine. John

Negus and John Henry robbed mine manager, Edward Visick of the weekly payroll and were able to remain at large for two weeks, before being apprehended in the Melbourne suburb of Collingwood. They were returned to Rutherglen for a hearing at this courthouse and then went to trial at Beechworth. Both received 12 year sentences with hard labour at Melbourne's Pentridge Prison.

The Court was closed in January 1990.



Rutherglen Court House circa 1860

You are now back at the intersection of Murray and High Streets, on the corner with the Memorial Hall next to you.

17 Rutherglen Memorial Hall

To honour those of the Great War, the Soldier's Memorial Hall was built in 1927 to replace the original town hall at a cost of £6,413.

The building was extended in 1955 to become the single largest community building in Rutherglen.

In 2007, a refurbishment at a cost of more than \$800,000 has restored the charm of the classic Art Deco interior gallery and stage.



Rutherglen Town Hall circa 1900s

“The district contributed 491 men to World War 1. Recruiting meetings started in 1915 and casualty reports became numerous. The ladies of the town knitted and rolled bandages and the men formed a Male Workers’ Guild, making walking sticks, splints, crutches, camp chairs and bed screens.”



Rutherglen Memorial Gardens circa 1920s

With the Hall on your left proceed along Murray Street in a westerly direction. Adjacent to the Memorial Hall you will see the Park.

18 Rutherglen Memorial Gardens

These gardens, like others throughout Australia, pay tribute to all who served in conflict. Each Anzac Day an ever increasing number of Rutherglen people and visitors attend the Dawn Service here.

Tucked away over the fence and in the corner of the caravan park is a 1956 memorial drinking fountain erected by the staff of the Valencia Shoe Company, in memory of a fellow employee who lost his life in the Murray River.

Look behind the park to see the Rutherglen Swimming Pool.

19 Rutherglen Swimming Pool

Built in the 1950s with voluntary labour, it has provided a safe swimming haven and decreased the number of drownings caused by bathing in the Murray River.

At the entrance to the Caravan Park is Lake King.

You now have an option - you may circumnavigate the lake where you might see a variety of water birds and long-necked tortoises. This detour ends at the Golf Course

or

continue with The Walk by turning right across the lake wall.



Lake King Walking Track circa 1950s

20 Lake King and Viewing Platform

From the lake wall you will see on your right the Rutherglen Bowling club, where bowls have been played since 1904.

At the end of the lake wall, walk over the bridge. Look to the top of the rise ahead and there sits the Rutherglen Golf Club.

21 Rutherglen Golf Club

Formed in June 1900, the club was initially located in Sheridans Bridge Road (South of Rutherglen). In 1926 a nine hole course was established here extending to a full 18 hole course in 1965.

22 Cairn commemorating the Discovery of Gold

On the small traffic island you will see a cairn, erected in 1930 as a tribute to the party of miners who discovered gold near this point in September 1860.





Clydeside Cellars circa 1890s

Opposite is a large set of buildings.

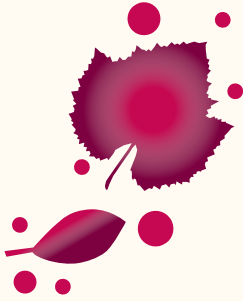
23 13-35 Drummond St

Originally built as a winery in 1886 for Hamilton's Clydeside Cellars, this building was purchased by Oscar Seppelt in 1915 and extended in 1946. The palm trees were planted by Seppelt to be consistent with all the Seppelt properties throughout Australia. It also bears many architectural similarities to the cellars at Seppeltsfield in the famous Barossa Valley of South Australia.

The building passed into the hands of Inter City Mills and Best Foods who set up their Research and Development Department in the building. Tuileries Restaurant, which was formerly located at Distillery Road Wahgunyah, was purchased and re-established in this building as a place to entertain visitors to their business.



Travel back up Main Street towards the town centre.



24 148-152 Main St

Another beautiful example of Victorian hotel architecture, this hotel was built in 1895 to replace the original hotel erected in 1861. The coach entrance on the left hand side is typical of the era, as is the fine wrought iron work. However, the origin of the unusual convex roof design is unknown.



The Cumberland Hotel circa 1900s

Continue your walk along Main Street on the left hand side.

Looking to the opposite side you will see another grand Victorian era hotel.

25 143-145 Drummond St
Grahams Building

Built in 1897, this building originally housed the Rutherglen Branch of General Providers, Punshon & Co. As only the third such branch in Victoria of the Footscray-based business, it provided very important retail and wholesale services for the community.

26 120 Main St

Originally built as the 'Golden Ball Hotel' in 1860, the hotel was purchased in 1863 by William Booth and renamed The Rutherglen Hotel. It acted as the Booking Office for coaches bound for Melbourne and several other towns. The front two-story section was added in 1924 using bricks from the dismantled Globe Hotel.



Rutherglen Hotel circa 1920s

27 Hitching Rail, outside 116 Main Street

Jackie's Folly. This replica was erected by J O'Keefe when he owned a hair dressing business from 1957, the reason for which has been lost in the annals of time. Until a few years ago, it was used as a hitching rail for the coach and horses that took tourists around the wineries.

28 113 Main Street, Rutherglen Apothecary

After being built for the town's Pharmacist Mr R Harvie in 1928, this tailor-made apothecary served as the town's pharmacy until 2006. Note the leadlight windows above the main window!

29 111 Main Street, Sun Printing Office

This building retains its original facade which was constructed in 1888 for William Beecroft, a saddler. It became home to Rutherglen's newspaper some years later.

The Sun Newspaper was founded in February 1885 by James C Hart and after a very brief lifetime, closed in December of that same year. The plant and equipment was purchased by Thomas Drenen in February 1886 and the paper re-opened as The Rutherglen Sun and Chiltern Valley Advertiser. In 1912 the business moved into this building and remained until Drenen's ceased to publish in 1979. Micro-filmed copies of the all newspaper editions are kept at the Historical Museum.

“Beginning at the start of the second phase of gold mining, the paper gave encouragement to all forms of community enterprise.”



You are now at the intersection of Main Street and High Street, originally named Arglye Street and Elizabeth Street respectively.

30 104 Main Street

The land was purchased for £1,000 and the building erected in 1896 for the Bank of Victoria. The wall plaque marks the point from which John Darbyshire surveyed the township in 1861. The building, which still has its original vault, operates as Rutherglen's only full-time bank.



31 105 Main Street

This is the fourth of the grand country hotels still remaining in Rutherglen.

This is the site where John A Wallace established the first Star Hotel in 1860. He purchased The Eagle Hotel which was situated on the New Ballarat diggings for £450 and had it transported to Rutherglen. In 1902 this timber hotel burnt down and was replaced by the present building, erected in the Edwardian style.



Star Hotel circa 1940s

Turn left into High Street and cross to the west side of the street. Continue along until you get to

32 130 High St

This cement rendered Victorian Italianate style building was erected in 1891 as a menswear store. In 1897, a Nurse Nicholas registered the building as a private Hospital which operated until the State Bank of Victoria purchased the building 1903. A number of changes were made and the bank moved in, in 1904 and continued business in the building until 1970.

33 High Street, Drinking Fountain

Donated to the town by R Ready in memory of members of his family.

34 108 High Street

The Manse for the Congregational Church was built in 1881. The Congregational Church which is next door was built in 1877 and is now the Scout Hall.

35 100 High Street

This house was originally a Church hall and was renovated and turned into a residence in 1920.

36 92 High Street

Ready Homestead was built in 1899 by Royston Ready, a local councillor and undertaker who conducted his business at the rear of the property.

Of weatherboard construction, this Victorian filigree building features multiple gables, finials, slender verandah columns and intricate timber and cast iron ornamentation.



Ready Homestead circa 1900s

37 Corner High and Culbertson
Streets, Mount Carmel
Convent

The original Convent was opened for Primary School children in 1901 on the site of the current St Mary's Primary school. The foundation stone for this building was laid in 1927 and the convent opened, with ten Presentation Sisters in residence in 1928. Extensions were made to the building in 1956. In 1973, boarding facilities were closed and in 1989 a new school was erected across the road. The Convent was then closed.

“School opened on
March 11, 1901 with
390 pupils in a Gothic
building of red brick,
66 by 30 feet.”



You now have an option - a short additional walk to one of Rutherglen's iconic landmarks. The Bottle or you continue The Walk.

The Bottle Walk

Continue on to your right following Culbertson Street to the Water Tower (10 minutes)



Mt Carmel Convent circa 1950s

38 The Water Tower

The water tower, topped with a steel tank holding 72,000 gallons was completed in 1900 to supply the town's water. The tower became a backup supply once the new reservoir was constructed in 1945.

The mesh top section was erected in December 1969 with funds from the Rutherglen Wine Festival, and from a distance gives the effect of a large wine bottle.

39 The Wallace Cairn

As previously mentioned, John A Wallace (who named Rutherglen) was the owner of the Star Hotel. He was also 'father' of the Chiltern/ Rutherglen gold fields as he had interests in over 40 miles of leads in alluvial and quartz mining.

40 Rutherglen Railway Station

The Lilliput / Rutherglen / Wahgunyah Rail Line from Springhurst was the second oldest line coming off the Melbourne–Wodonga line. It was opened on the 29th of January 1879 and carried both freight and passengers. At its busiest, 33,959 passengers were carried in one year. The current station building was erected post World War II and the line closed in 1962.

You have now reached the end of the walk and if you pass through the Lions Park adjacent to the Railway Station, you will find yourself back at the Rutherglen Wine Experience.

ACKNOWLEDGEMENTS

The Rutherglen Heritage Walk was created by **Destination Rutherglen**, who would like to thank the following contributors for their assistance:

The **Rutherglen Historical Society** who spent time searching through historical archives to find details on some of our more 'mysterious' buildings.

Brian Lloyd & John Kennedy, co authors of Rutherglen, Wine Centre of North East Victoria. Brian and John's intimate knowledge of the region has been echoed throughout this Guide. The featured quotes are extracts from their book.

Indigo Shire Council, Rutherglen Estates, 3NE/Edge FM and Rutherglen Historical Society for their page sponsorship.



MORE INFORMATION



Visit the Common School Historical Museum in Murray Street. The Museum is open to the public on Sunday afternoons from 1pm to 4pm. Alternatively, information from the Rutherglen Historical Society can be obtained by contacting Ian Stones on 02 6032 9697.



Pick up a copy of Brian Lloyd & John Kennedy's book titled Rutherglen, Wine Centre of North-East Victoria.

This fascinating book is available from the Rutherglen Wine Experience and Visitor Information Centre.



The Rutherglen Wine Experience and Visitor Information Centre has a number of reference books and houses the historic cemetery records.

The Centre is located at 57 Main Street (on the roundabout) Rutherglen.

Phone: 1800 622 871

BEECHWORTH | CHILTERN | RUTHERGLEN | YACKANDANDAH



Discover a region
rich in gold history



Beechworth
Consume the Passion



Chiltern
Share the Magic



Rutherglen
Full of Flavour



Yackandandah
Unveil the Mystery

www.indigogoldtrail.com

93.3FM Mt Beauty

Edge

FM

102.1

Listen now www.edgefm.com.au

90.1FM
MT BEAUTY

1566AM

89.3FM
MT HOTHAM

3NE

99.1FM
MT BUFFALO

SOLID GOLD HITS

Listen now www.3ne.com.au

AG00759

www.edgefm.com.au www.3ne.com.au